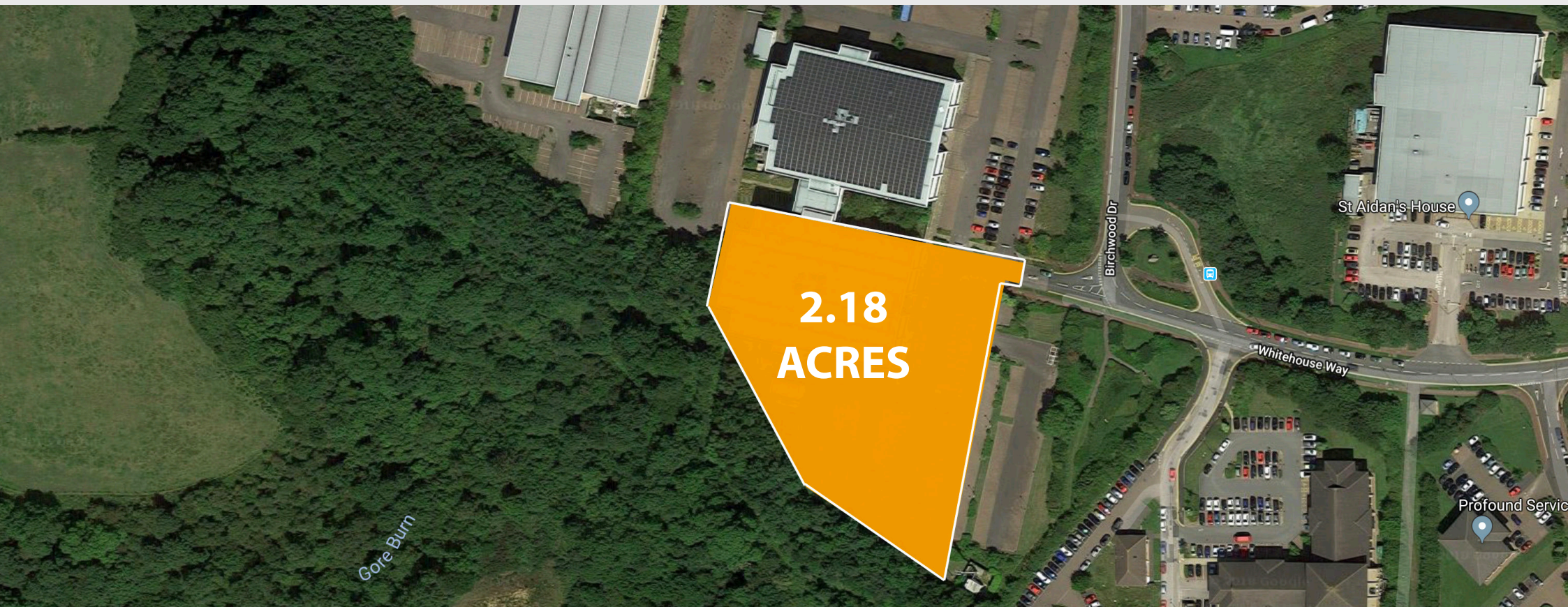


gemini

Brichwood Drive, Peterlee, County Durham, SR8 2RS



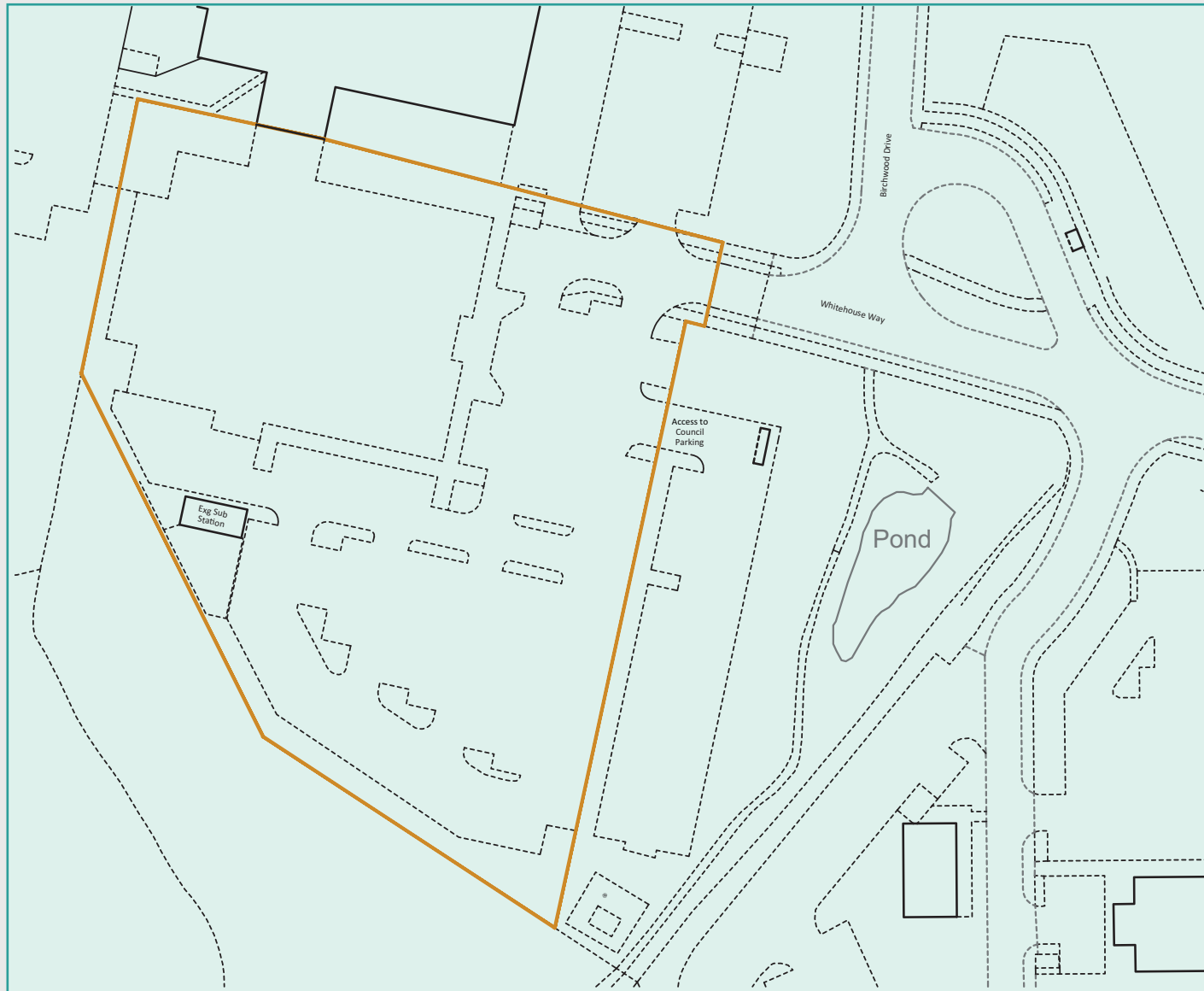
FI REAL ESTATE
MANAGEMENT



To Let

open storage land
suitable for hgv parking

Site Plan



- Approx 2.1 acres (may split)
- Available To Let
- Rent £100,000 pa
- Available by way of a full repairing lease for a term to be agreed.
- Further detail to be provided on gate/fencing.

Indicative Site Layouts - Lorry Park



lorry park option 1
42 lorry spaces

lorry park option 2
63 lorry spaces



* subject to acquiring adjoining site

Indicative Site Layouts - Container Store



container store option 1
75 container stores



container store option 2
107 container stores

* subject to acquiring adjoining site



location

The property is located within Gemini Industrial Park, a thriving industrial and office park with occupiers including Caterpillar, NSK Bearings, Knauf, Conder, Howdens Joinery. The property is accessed to the south west of Peterlee approximately 1 mile from the Peterlee Junction of the A19.

Peterlee is located between the Tyne and Wear and Teesside conurbations offering excellent road links via the A19. Durham train station is also just 10 miles away giving access to Newcastle in just over 10 minutes. The train station also provides access to other cities such as Leeds in just over an hour, and Manchester in just over two hours.



connectivity

Sunderland 12 miles
Durham 12.5 miles
Middlesbrough 19 miles
Newcastle upon Tyne 25 miles
Durham Tees Valley Airport 27 miles
Leeds 80 miles
Newcastle International Airport 30 miles

A19 Peterlee Junction - 1.4 miles
A1 (M) Junction 61 - 10 miles

gemini

Brichwood Drive, Peterlee, County Durham, SR8 2RS

TO SUNDERLAND
& A1 (M) ◀



TO MIDDLESBROUGH
& M1(M) ▶

ALL ENQUIRIES



FI REAL ESTATE
MANAGEMENT

0845 500 61 61
www.fi-rem.com
enquiries@fi-rem.com



Aidan Baker
0191 227 5737
aidan.baker@realestate.bnpparibas